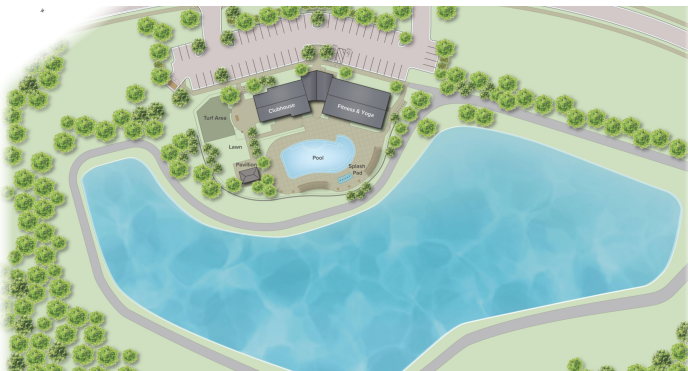
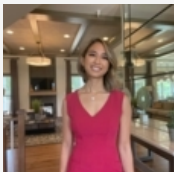


### Townhomes from the mid \$500's


201 Summit Point Boulevard , Bowie, MD 20716 | Prince George's County




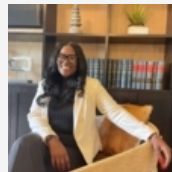
A new townhome at South Lake gives you the walkability and access you've always dreamed of. Whether you'll walk the kids to Liberty Sports Park for sports practice, or stroll down the street to the neighborhood Clubhouse to relax by the pool, South Lake has all the resort-style amenities, including fitness center, dog park, playground trails and more, right at your footsteps.




**Robin Roland**


 (301) 603-2333

 [rroland@MidAtlanticBuilders.com](mailto:rroland@MidAtlanticBuilders.com)



**Jasmin Tolbert**

 (301) 603-2333

 [jtolbert@MidAtlanticBuilders.com](mailto:jtolbert@MidAtlanticBuilders.com)

Programs and incentives subject to change without notice and available only when lender and title company from builders approved list are used. Maximum promotional package value varies by community and houseplan. Builder assistance is not to exceed maximum promotional package value. Not all buyers may qualify for program savings. Qualification to be determined by Mid-Atlantic Builders' preferred lender(s) prior to contract ratification. See a Mid-Atlantic Builders Sales Counselor for specific promotional package details as some restrictions apply. The name Mid-Atlantic Builders and the Mid-Atlantic Builders logo are registered service marks of Mid-Atlantic Builders, Inc. | MHBR #8749

