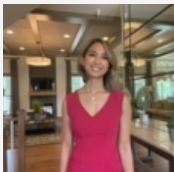


The Waverly at South Lake | \$662,733


624 Glenn Lake Drive, Bowie, MD 20716 | Homesite 69C
2,774 Sq. Ft. | 3 Beds | 3 Baths | Availability: 11/2023




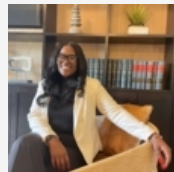
- 2-Car Front-Load Garage End-Unit and Modern Black Frame Windows
- Standard Entry-Level Rear Recreation Room and Powder Room
- Open Concept First-Floor including a Gourmet Kitchen with 13 Foot Island, Dining Room, and Great Room
- Upgraded Sliding Glass Doors leading to Rear Deck
- Luxurious Primary Suite and Spa Bath including Shower and Tub
- Convenient 2nd Floor Laundry Room




Robin Roland


 (301) 603-2333

 rroland@MidAtlanticBuilders.com



Jasmin Tolbert

 (301) 603-2333

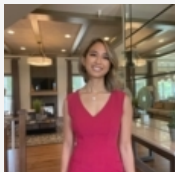
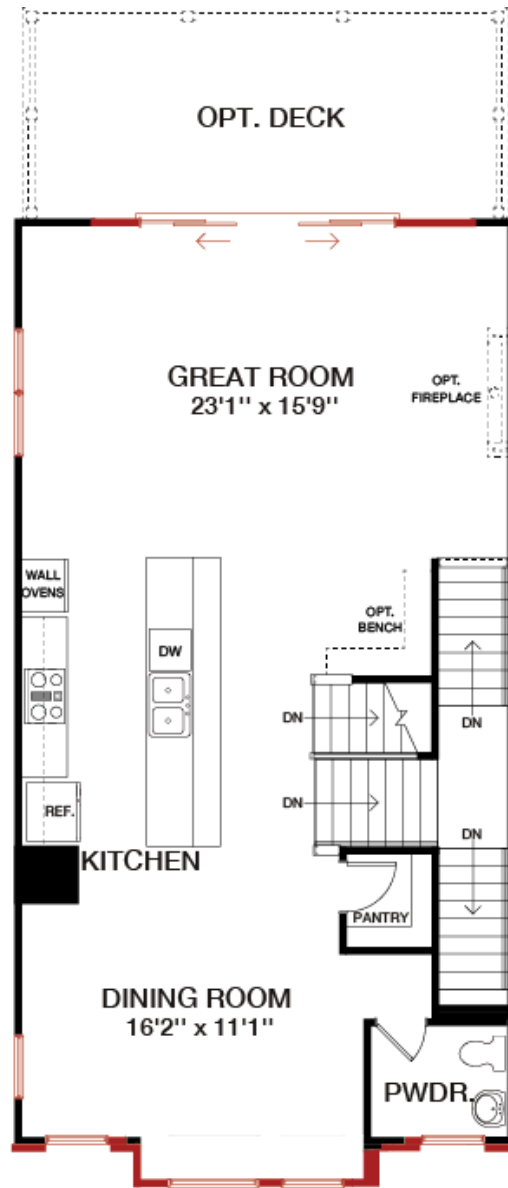
 jtolbert@MidAtlanticBuilders.com

Programs and incentives subject to change without notice and available only when lender and title company from builders approved list are used. Maximum promotional package value varies by community and houseplan. Builder assistance is not to exceed maximum promotional package value. Not all buyers may qualify for program savings. Qualification to be determined by Mid-Atlantic Builders' preferred lender(s) prior to contract ratification. See a Mid-Atlantic Builders Sales Counselor for specific promotional package details as some restrictions apply. The name Mid-Atlantic Builders and the Mid-Atlantic Builders logo are registered service marks of Mid-Atlantic Builders, Inc. | MHBR #8749





Floorplan

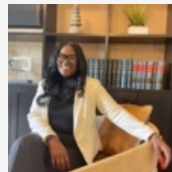
First Floor




Robin Roland


 (301) 603-2333

 rroland@MidAtlanticBuilders.com



Jasmin Tolbert

 (301) 603-2333

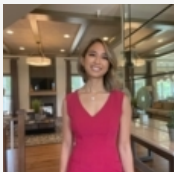
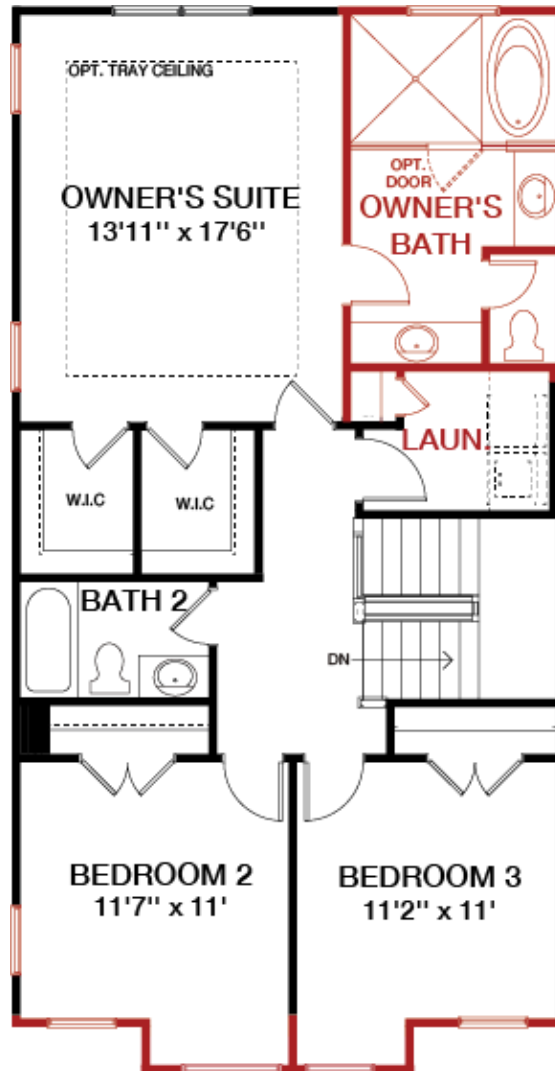
 jtolbert@MidAtlanticBuilders.com

Programs and incentives subject to change without notice and available only when lender and title company from builders approved list are used. Maximum promotional package value varies by community and houseplan. Builder assistance is not to exceed maximum promotional package value. Not all buyers may qualify for program savings. Qualification to be determined by Mid-Atlantic Builders' preferred lender(s) prior to contract ratification. See a Mid-Atlantic Builders Sales Counselor for specific promotional package details as some restrictions apply. The name Mid-Atlantic Builders and the Mid-Atlantic Builders logo are registered service marks of Mid-Atlantic Builders, Inc. | MHBR #8749





Floorplan

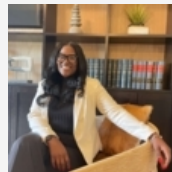
Second Floor




Robin Roland


 (301) 603-2333

 rroland@MidAtlanticBuilders.com



Jasmin Tolbert

 (301) 603-2333

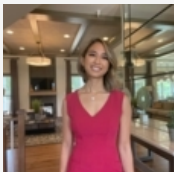
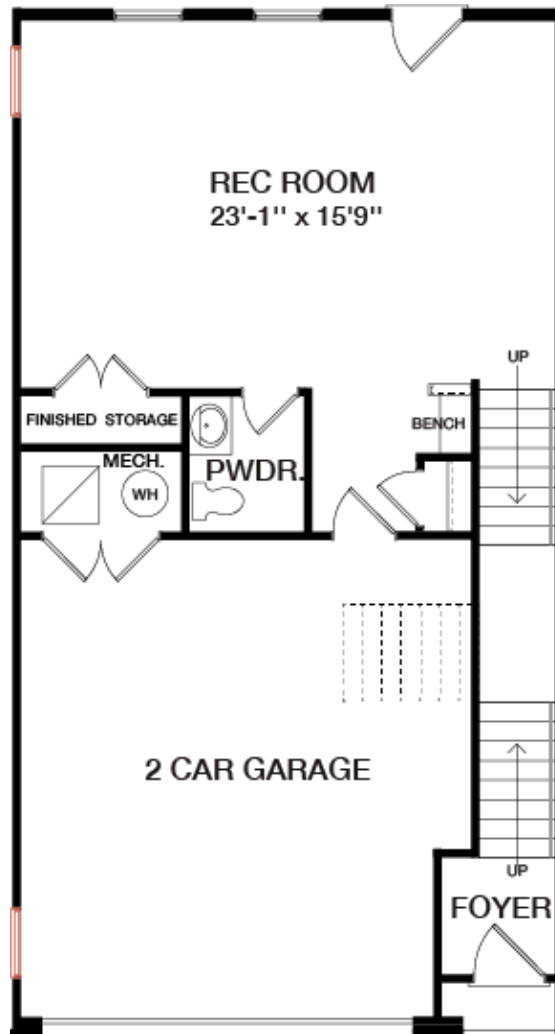
 jtolbert@MidAtlanticBuilders.com

Programs and incentives subject to change without notice and available only when lender and title company from builders approved list are used. Maximum promotional package value varies by community and houseplan. Builder assistance is not to exceed maximum promotional package value. Not all buyers may qualify for program savings. Qualification to be determined by Mid-Atlantic Builders' preferred lender(s) prior to contract ratification. See a Mid-Atlantic Builders Sales Counselor for specific promotional package details as some restrictions apply. The name Mid-Atlantic Builders and the Mid-Atlantic Builders logo are registered service marks of Mid-Atlantic Builders, Inc. | MHR #8749





Floorplan

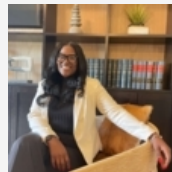
Lower Level




Robin Roland


 (301) 603-2333

 rroland@MidAtlanticBuilders.com



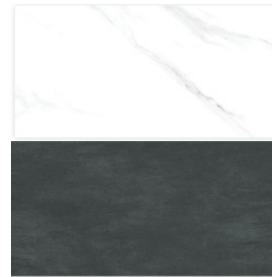
Jasmin Tolbert

 (301) 603-2333

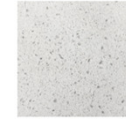
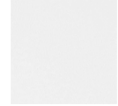
 jtolbert@MidAtlanticBuilders.com

Programs and incentives subject to change without notice and available only when lender and title company from builders approved list are used. Maximum promotional package value varies by community and houseplan. Builder assistance is not to exceed maximum promotional package value. Not all buyers may qualify for program savings. Qualification to be determined by Mid-Atlantic Builders' preferred lender(s) prior to contract ratification. See a Mid-Atlantic Builders Sales Counselor for specific promotional package details as some restrictions apply. The name Mid-Atlantic Builders and the Mid-Atlantic Builders logo are registered service marks of Mid-Atlantic Builders, Inc. | MHBR #8749

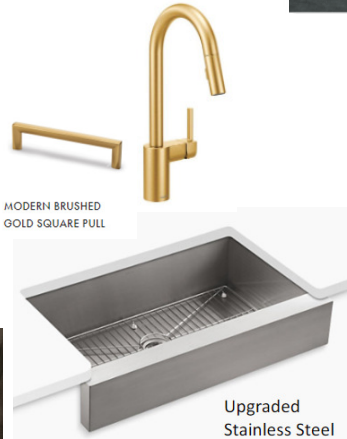




Owner's Bath



Secondary Baths



MODERN BRUSHED GOLD SQUARE PULL

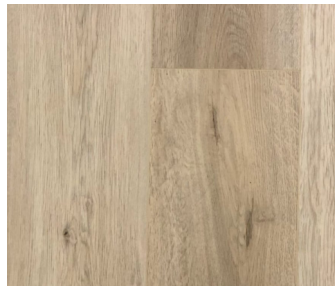
Upgraded Stainless Steel



Samsung Gas Cooktop
SNA30N6555TSAA Stainless Steel



Samsung Oven / Microwave Combo
SNG70M6650DSAA Stainless Steel



Samsung French Door Refrigerator
SRF27T5201SRAA Fingerprint Resistant SS



Samsung Built-In Dishwasher
SDW80N3030USAA Stainless Steel



Bedroom and Rec Room
Carpet

Reminder: Variations in color are due to differences in computer monitors, video graphics cards, printers, and on-screen settings.