



# Mid-Atlantic Builders<sup>SM</sup>

## Move-In-Now Homes

South Lake  
Bowie, MD

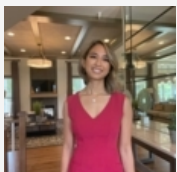
### The Vista at South Lake | \$651,596

207 Summit Point Boulevard, Bowie, MD 20716 | Homesite 4B

3,089 Sq. Ft. | 3 Beds | 3 Baths | AVAILABLE NOW



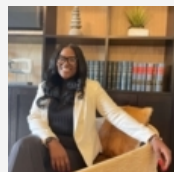
- Elevation 6008 including a bump-out on 2nd level, Modern Black Frame Windows
- Large Entry-Level Recreation Room and Powder Room
- Open Concept First-Floor, a Gourmet Kitchen, Dining Room, and Family Room
- Bright Kitchen with Upgraded Cabinets, Matte Black Hardware and Quartz Countertops
- Standard Rear Covered Terrace off the Family Room
- Luxurious Owner's Suite and Dual Walk-In Closets with Grand Shower Layout



**Robin Roland**

(301) 603-2333

rroland@MidAtlanticBuilders.com



**Jasmin Tolbert**

(301) 603-2333

jtolbert@MidAtlanticBuilders.com

July 1st 2022 Programs and incentives subject to change without notice and available only when lender and title company from builders approved list are used. Maximum promotional package value varies by community and houseplan. Builder assistance is not to exceed maximum promotional package value. Not all buyers may qualify for program savings. Qualification to be determined by Mid-Atlantic Builders' preferred lender(s) prior to contract ratification. See a Mid-Atlantic Builders Sales Counselor for specific promotional package details as some restrictions apply. The name Mid-Atlantic Builders and the Mid-Atlantic Builders logo are registered service marks of Mid-Atlantic Builders, Inc. | MHBR #8749

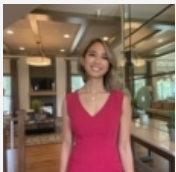
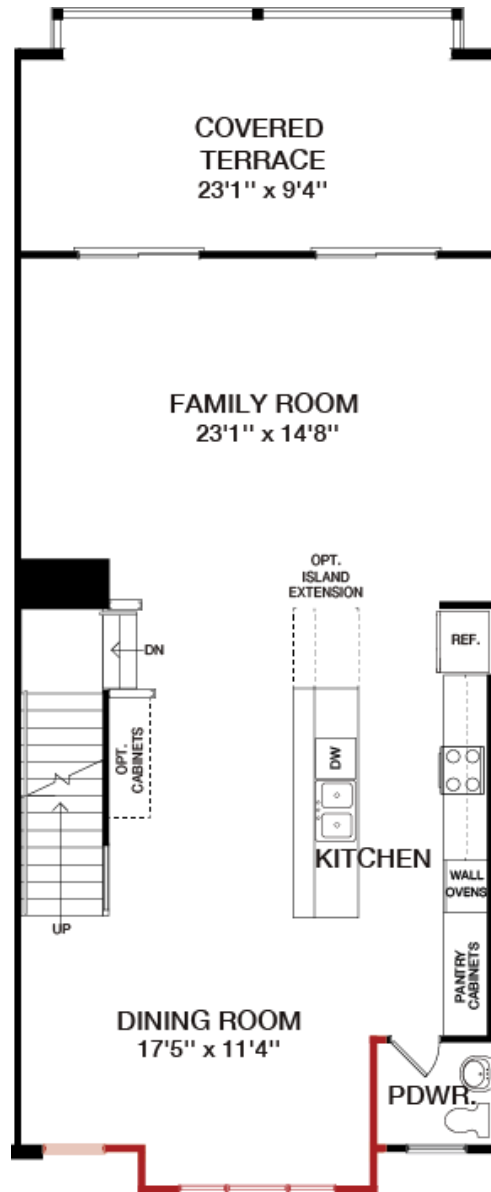


**BUILT JUST FOR YOU**



## Floorplan

### First Floor



**Robin Roland**

(301) 603-2333

rroland@MidAtlanticBuilders.com



**Tina Grimes**

(301) 603-2333

tgrimes@MidAtlanticBuilders.com

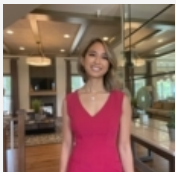
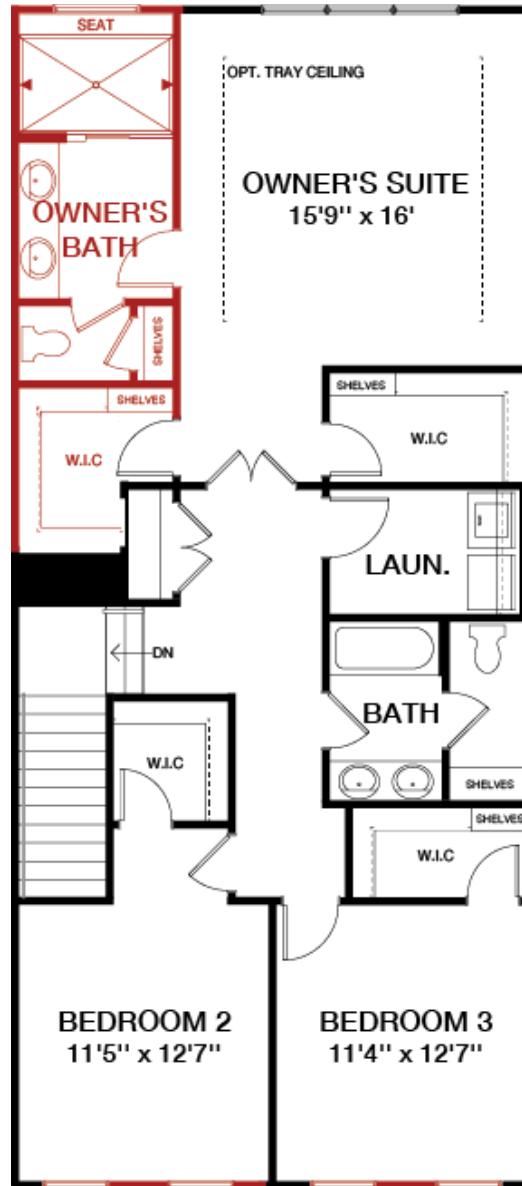
July 1st 2022 Programs and incentives subject to change without notice and available only when lender and title company from builders approved list are used. Maximum promotional package value varies by community and houseplan. Builder assistance is not to exceed maximum promotional package value. Not all buyers may qualify for program savings. Qualification to be determined by Mid-Atlantic Builders' preferred lender(s) prior to contract ratification. See a Mid-Atlantic Builders Sales Counselor for specific promotional package details as some restrictions apply. The name Mid-Atlantic Builders and the Mid-Atlantic Builders logo are registered service marks of Mid-Atlantic Builders, Inc. | MHBR #8749





## Floorplan

### Second Floor



**Robin Roland**

(301) 603-2333

rroland@MidAtlanticBuilders.com



**Tina Grimes**

(301) 603-2333

tgrimes@MidAtlanticBuilders.com

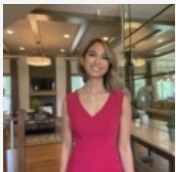
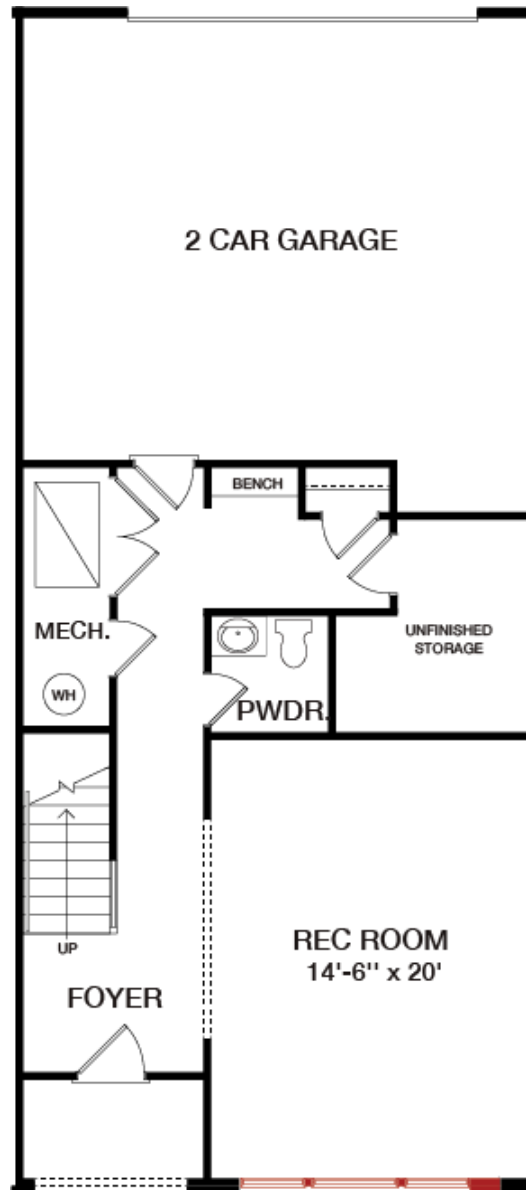
July 1st 2022 Programs and incentives subject to change without notice and available only when lender and title company from builders approved list are used. Maximum promotional package value varies by community and houseplan. Builder assistance is not to exceed maximum promotional package value. Not all buyers may qualify for program savings. Qualification to be determined by Mid-Atlantic Builders' preferred lender(s) prior to contract ratification. See a Mid-Atlantic Builders Sales Counselor for specific promotional package details as some restrictions apply. The name Mid-Atlantic Builders and the Mid-Atlantic Builders logo are registered service marks of Mid-Atlantic Builders, Inc. | MHBR #8749





## Floorplan

### Lower Level



**Robin Roland**

(301) 603-2333

rroland@MidAtlanticBuilders.com



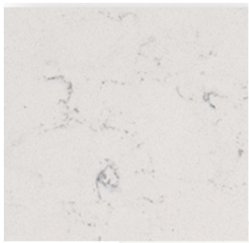
**Tina Grimes**

(301) 603-2333

tgrimes@MidAtlanticBuilders.com

July 1st 2022 Programs and incentives subject to change without notice and available only when lender and title company from builders approved list are used. Maximum promotional package value varies by community and houseplan. Builder assistance is not to exceed maximum promotional package value. Not all buyers may qualify for program savings. Qualification to be determined by Mid-Atlantic Builders' preferred lender(s) prior to contract ratification. See a Mid-Atlantic Builders Sales Counselor for specific promotional package details as some restrictions apply. The name Mid-Atlantic Builders and the Mid-Atlantic Builders logo are registered service marks of Mid-Atlantic Builders, Inc. | MHBR #8749





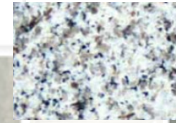
MATTE BLACK SQUARED  
PULL



Owner's Bath



Secondary Baths



Lower Level Powder  
Room



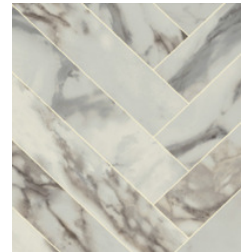
Arbor™ Matte Black



Samsung Gas Cooktop  
SNA30N6555TSAA Stainless Steel



Samsung Over-the-Range Microwave  
SME19R7041FSAA Fingerprint Resistant SS



Laundry Room



SONOMA



Samsung Built-In Dishwasher  
SDW80N3030USAA Stainless Steel



Samsung Side-by-Side Refrigerator  
SRSZ7T5200SRAA Fingerprint Resistant SS



Samsung Double Electric Wall Oven  
SNV51K6650DSAA Stainless Steel



Bedroom and Rec Room  
Carpet

\*Reminder: Variations in color are due to differences in computer monitors, video graphics cards, printers, and on-screen settings.\*