

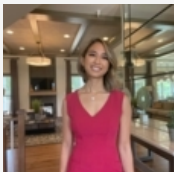
**Waverly Essential Series (E-Series) | \$578,950**

724 Glenn Lake Drive, Bowie, MD 20716 | Homesite 22C


2,373 Sq. Ft. | 3 Beds | 3 Baths | Availability: 12/2023




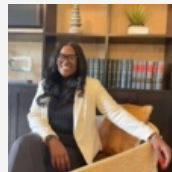
- 24' Wide Townhome with 2-Car Front Load Garage
- Large Entry-Level Rec Room
- Open Concept Family Room, Dining Room, and Gourmet Kitchen with Chef's Island
- Rear Deck off the Family Room
- Luxurious Primary Suite, Oversized Walk-In Closet, and Double Vanity Primary Bathroom
- Two Secondary Upper-Level Bedrooms and Upper-Level Walk-In Laundry Room




**Robin Roland**


 (301) 603-2333

 rroland@MidAtlanticBuilders.com



**Jasmin Tolbert**

 (301) 603-2333

 jtolbert@MidAtlanticBuilders.com

Programs and incentives subject to change without notice and available only when lender and title company from builders approved list are used. Maximum promotional package value varies by community and houseplan. Builder assistance is not to exceed maximum promotional package value. Not all buyers may qualify for program savings. Qualification to be determined by Mid-Atlantic Builders' preferred lender(s) prior to contract ratification. See a Mid-Atlantic Builders Sales Counselor for specific promotional package details as some restrictions apply. The name Mid-Atlantic Builders and the Mid-Atlantic Builders logo are registered service marks of Mid-Atlantic Builders, Inc. | MHBR #8749

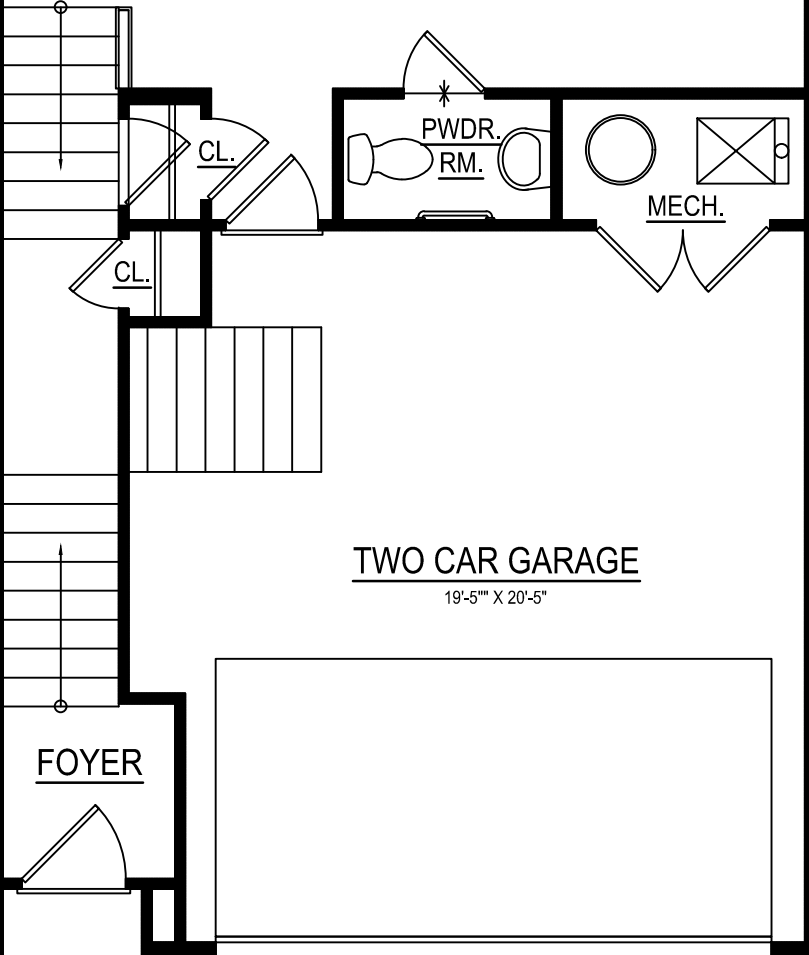




3060

3060

REC ROOM  
23'-0" X 13'-9"



FOYER

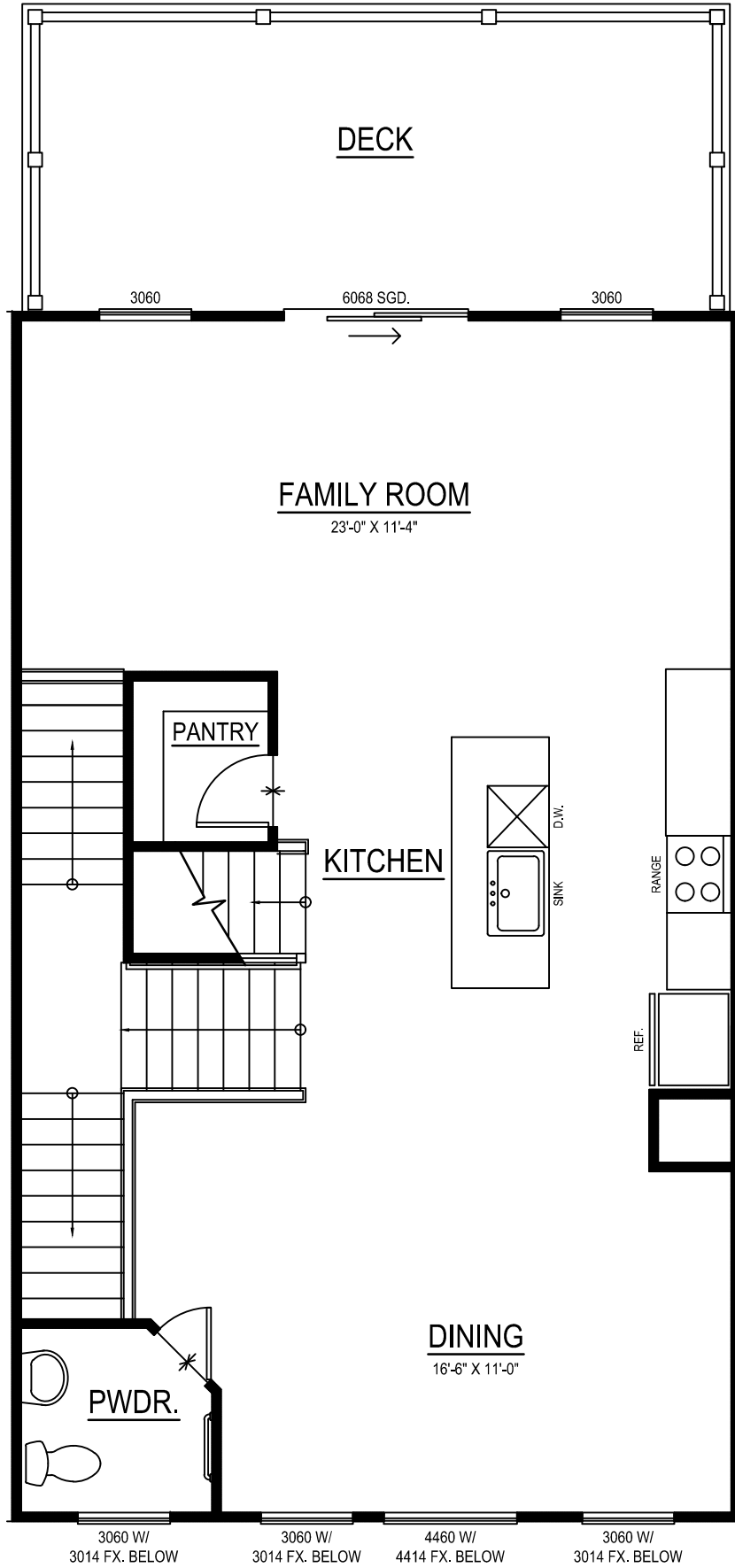
TWO CAR GARAGE  
19'-5" X 20'-5"

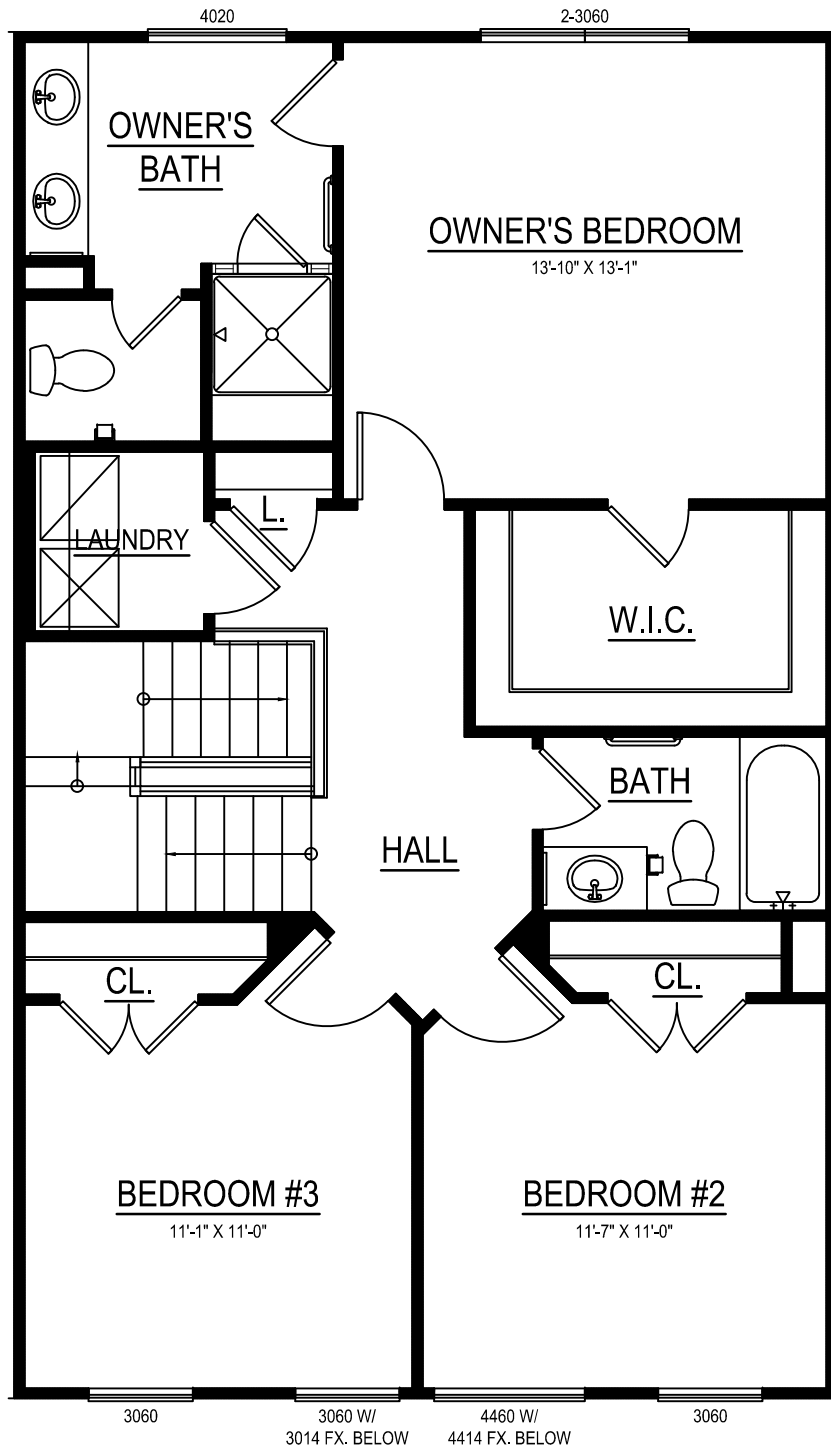
PWDR.  
RM.

MECH.

CL.

CL.







Owner's Bath



Secondary Baths



SONOMA



Laundry Room



Bedroom and Rec Room  
Carpet

\*Reminder: Variations in color are due to differences in computer monitors, video graphics cards, printers, and on-screen settings.\*