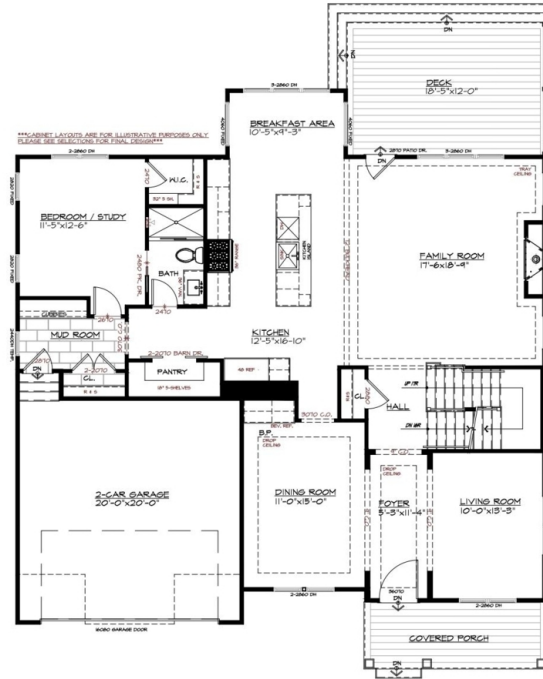


5917 Lone Oak Drive, Bethesda, MD 20817

From the high \$2.2M's | 4,864 Sq. Ft. | 6 Beds | 5 Baths | AVAILABLE NOW



FLOOR PLANS AND ELEVATIONS ARE FOR ILLUSTRATIVE PURPOSES ONLY. ALL DIMENSIONS ARE APPROXIMATE. SOME AVAILABLE OPTIONS ARE NOT SHOWN. PURCHASER IS HEREBY ADVISED THAT MANUFACTURER SPECIFICATIONS MAY VARY IN DIMENSIONS, COLORS, ETC. FROM THOSE DEPICTED IN PLANS, RENDERINGS, INCLUDED FEATURES, ETC.

A6 FIRST FLOOR
5917 LONE OAK DR
BETHESDA, MD 20814

FIRST FLOOR: 1,600 SQ.FT.
SECOND FLOOR: 1,820 SQ.FT.
FINISHED ABOVE GRADE: 3,420 SQ.FT.
BASEMENT FLOOR: 1,444 SQ.FT.
TOTAL FINISHED: 4,864 SQ.FT.

DATE: 01/30/23




A6 SECOND FLOOR
5917 LONE OAK DR
BETHESDA, MD 20814

FIRST FLOOR: 1,600 SQ.FT.
SECOND FLOOR: 1,820 SQ.FT.
FINISHED ABOVE GRADE: 3,420 SQ.FT.
BASEMENT FLOOR: 1,444 SQ.FT.
TOTAL FINISHED: 4,864 SQ.FT.

DATE: 01/30/23

Joe Korzeniowski

 (301) 231-0009 ext. 302

 joek@MidAtlanticBuilders.com

Floorplans, elevations, and siteplans are for illustrative purposes only and subject to change. All dimensions are approximate. | MHBR #7029, 6062

